

ANDRITZ RheoScan

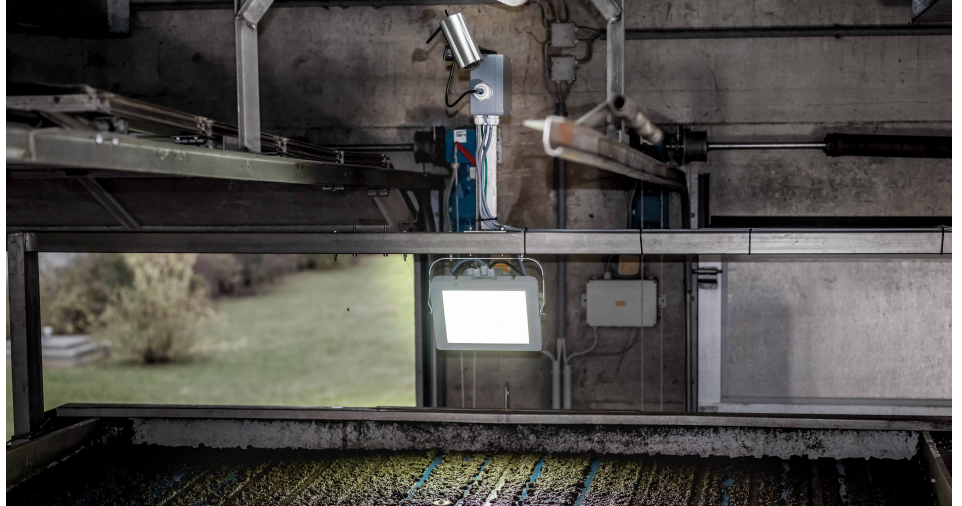
‘Panta Rhei’ - everything flows!



ANDRITZ RheoScan

Automatic adjustment of polymer usage

'Panta Rhei' - everything flows! ANDRITZ RheoScan, one of the latest developments by expert engineers at ANDRITZ AUTOMATION, is a patented technology for efficient regulation of automated polymer dosage. By understanding sludge flow characteristics, optical measurement enables maximum efficiency in polymer utilization by making adjustments depending on actual sludge viscosity. The ANDRITZ RheoScan saves up to 30% of polymer consumption on permanent machine operation. Different connectivity solutions are available.

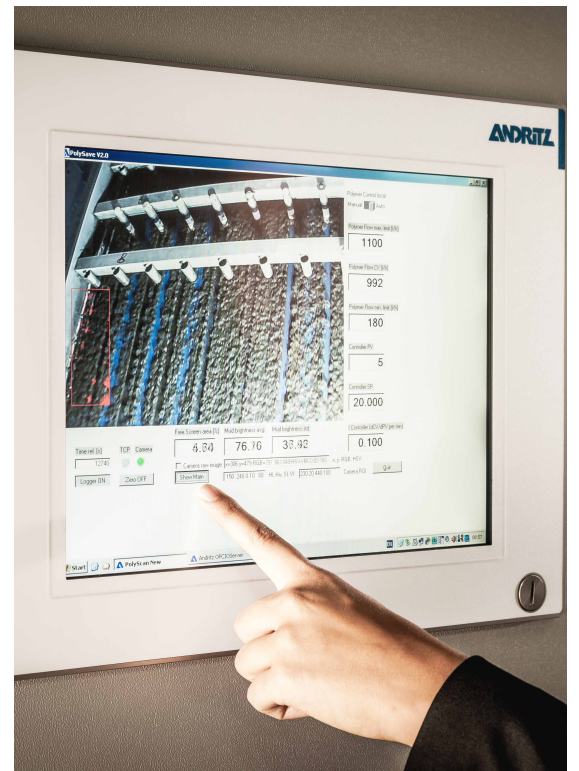


Characteristics

ANDRITZ RheoScan	Included
Digital camera with focus on sludge texture	✓
Lighting equipment (LED) for illumination of relevant sludge area	✓
Cabinet (W600 H600 D350) with panel PC for visualization and parameter control	✓
Optical measurement system via preferred connectivity:	✓
▪ OPC server provides process data via ethernet cable	
▪ Profi-bus connection	
▪ Hard-wired (4-20mA analog or 24VDC digital)	
Analog and binary signal exchange between customer and ANDRITZ according to individually defined standards	✓

Benefits

- Increase of process stability
- Increase of plant reliability
- Best thickening performance due to optimal fluidity
- Polymer reduction of up to 30%



ANDRITZ AG
Stattegger Strasse 18
8045 Graz, Austria
Phone: +43 (316) 6902 2442



www.andritz.com
automation@andritz.com